



Autumn – season of new beginnings!

This is the time of year when we celebrate Harvest festival and the ripening of fruit. But in many of our families and activities it is also a time when the new session starts up again. The school year is started and children are in new classes, students are going off to university. In the church all the groups are underway and there is the opportunity to join new activities. This issue of Hilltop introduces us to many of the activities which are held at the church at Bents Green. All are open to new members. Come on in!

In this issue

<i>A new job at Bents Green</i>	<i>p2</i>
<i>Toilet twinning at Harvest</i>	<i>p2</i>
<i>Window shopping</i>	<i>p3</i>
<i>Tea, Toast & Time 4</i>	<i>p4</i>
<i>Thinking</i>	
<i>What is the Friendship Club?</i>	<i>p4</i>
<i>SPAR has (also) been refurbished!</i>	<i>p5</i>
<i>News from Bents Green Arts & Bents Green Singers</i>	<i>p5</i>
<i>Church News</i>	<i>p6</i>
<i>What is Spotlight?</i>	<i>p6</i>
<i>Introducing Cherry</i>	<i>p7</i>
<i>Holiday Club photos</i>	<i>p7</i>
<i>Regular Church Activities</i>	<i>p8</i>

Songs for the King

A concert with Philippa Hanna and Godfrey Birtill
 Saturday 1st November at 7.30 pm at Bents Green Church
 Tickets are now on sale £10 (£5 for under 18s) See page 7 for details of how to get tickets for this exciting concert

Songs for the King
 a concert with
 Philippa Hanna & Godfrey Birtill
 at
Bents Green Church
 (Junction of Ringinglow Road & Knowle Lane, Sheffield S11 7PU)
 on Saturday 1st November at 7.30 pm

Tickets £10 (£5 for under 18's) available from Daphne, 57 Carterknowle Avenue, Sheffield S11 9FT

Please send stamp-addressed envelope and cheque with order. Please make cheques payable to: Bents Green Methodist Church

A new job at Bents Green



John Wilkins has taken on the role of Lay Assistant Minister at Bents Green Church from the start of September. He explains what it's all about.....

What will you be doing in your new role?

Good question! Our minister, Louise, has taken on an important new job as one of the four co-superintendents in the new Methodist Circuit. This will take her all over the City and take up a lot of her time. She remains our minister but will have less time available to spend at Bents Green. My task is to support Louise by taking on some of the things she won't be able to do. This will include some pastoral work and, for instance, chairing the Resources Committee. I want to be flexible to support her as best I can as Louise's role develops.

What do you already know about the church at Bents Green?

I've been a member of the church since 1980, and preached here as a local preacher since then. Over the years I have been a steward, youth leader, house group leader and even treasurer. So I have some background. But one of the exciting things is that new people keep joining us, and I look forward to getting to know them better.

What do you do when not working at the church?

My wife Tina died two years ago, so life is changing. I have four children, Anna in Sheffield, Lucy and Kate in Southend, and Dave in South Africa, and I visit them as often as I can – hopefully going to South Africa in the new year. I have a dog, Daisy, so I go walking a lot, often with friends from church. And, as a chaplain to South Yorkshire Police and a street pastor, I am involved in other things across the city.

How do you feel about your new role in the church at Bents Green?

A bit daunted but excited. It's a great opportunity for me to work with Louise and the Church Leadership Team. I believe God is going to do great things to help us grow in our faith and our work in the community, and it will be a privilege to be part of that.

Harvest Offering: Toilet Twinning

Each year at Harvest Thanksgiving we choose a project for our Harvest Offering. This year we have chosen to twin our new toilet through the Toilet Twinning scheme run by Tearfund and Cord.

What is toilet twinning?

Toilet twinning is a way of raising funds to enable people living in poor communities to have clean water and a decent toilet. This vital combination prevents the spread of disease, reduces the number of deaths among children, and brings hope for the future.

Did you know?

- Every minute, 3 children under the age of 5 die because of dirty water and poor sanitation.
- Half of young girls who drop out of school do so because they are needed at home to collect water or because the school has not got a basic toilet.
- No loo at home, at school or at church makes women and girls particularly vulnerable as they walk to somewhere private in the open, especially at night.



How does toilet twinning work?

For a £60 donation to the Toilet Twinning scheme we can twin our toilets at church with a latrine in one of the

poorest countries in the world. More money would provide more than one toilet. We could even aim to build a sanitation block. Individual people, schools or places of work can also join the scheme.

What do we get?

We will receive a certificate about our twin toilet, with its photo, its location, and its GPS coordinates so we can look it up on Google Maps.

Are you feeling flush?

Please donate and make a difference. Our harvest offering will enrich someone's life as we provide sanitation by this simple, direct and effective action.

For more information, visit www.toilettwinning.org, or ask Tricia North or Anne Evans how you can help.



Window Shopping

One of the things I enjoy doing on a day off is meeting a friend, and having time to catch up on what is happening in each other's lives. Last Friday I met a friend in Southwell in Nottinghamshire. It's a lovely place to enjoy plenty of teas, coffees, and lunch, all important for a chatty day. It is a small market town and has a beautiful Minster. It also gave us an opportunity to window shop and occasionally go into a shop, and have a bit more of a browse. We both eventually bought something, after looking through a few more windows!

What we celebrate now at Bents Green with our refurbished church is a church that you can see when you look through a window. No longer is it hidden away. People can peer in and hopefully see that it is a lively, friendly church comprising different age groups, and that we find joy in meeting together.

In the summer I read a newspaper article by a journalist, Camilla Cavendish, whose mum had died. She wrote that she struggled to see God, but yet, especially at this time of mourning, she valued His house. She also discerned, reflecting on a Phillip Larkin poem, *Church Going*, that the church will only continue to be available to those who find they need it if enough people support it.

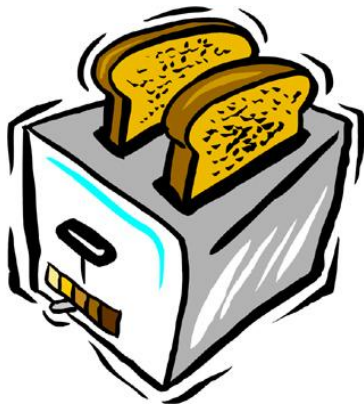
For Camilla it was important that the church was there for her, that she felt included and that she belonged, before she could believe. Jesus called all sorts of people to follow Him. They were still struggling with who Jesus really was and with what they should believe about him some time after they had begun to follow. But they knew they belonged and that they were loved and of great value.

We would love those who are walking past to peer in through the new doors and windows, but we pray that you may also be tempted to come in, for you would be very welcome. We want you to know that it is a place where you may begin to feel that you belong, are loved and cared and prayed for, long before perhaps you begin to work out for yourself just who Jesus is for you.

Jesus invited two of John's disciples to 'Come and see.' Philip invited Nathanael to 'Come and see Jesus'. We would like to invite you to 'Come and see'. Window-shop, come in, have a cup of tea or coffee, come and join us for worship. Just don't stop looking.

Hope to see you soon. God bless, Louise.

The first Sunday after she went I felt an overwhelming urge to go and light a candle in church. This surprised me. But it seemed immeasurably powerful compared with anything else I had done. That flicker of the eternal, of hope, of recognition, was important to me.
Camilla Cavendish, Sunday Times 13.7.2014



Tea, Toast & Time 4 Thinking

Thursdays at 10.30 am (every fortnight) in the Church Lounge

Tea and Toast is a small group specially set up about 4 years ago for mums and carers of small children. Katie Vernon was involved at the beginning and described how nervous she felt about inviting people to come to it. She spoke to friends at the school gate and was very unsure what they would think about being invited to discuss the Christian faith. But she found people that were interested and the group came together.

There is now a strong core membership and they are always looking out for new people who would like to give it a try. It is a group for anyone who is interested in talking about the Christian faith. You don't need to know about Christianity, just to want to know more.

The group meets at 10.30 allowing members to drop children off at pre-school and go home for a little and then come back to meet together in the church lounge. Children come too and there are toys out for them to play with. The group is comfortable with nappy-changing, breast feeding and conversations with the children. These are all part of the time together. There is always a changing membership because mums may have to go back to work when maternity leave ends.

The atmosphere is relaxed and supportive starting with tea and toast and chat. Trust has built up within the group and they can talk about things on their minds as well as catch up on news. Katie values having a group where she can talk about spiritual things and where the group will pray together. She finds that talking about things together helps her move forward.

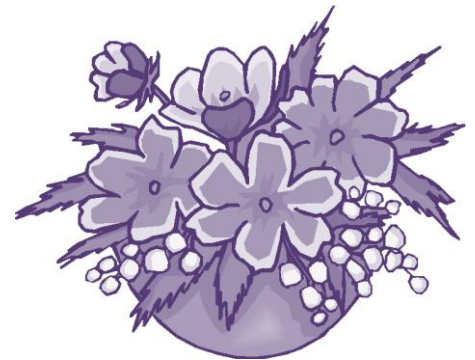
The group often follows the same series as church services such as Fruitfulness on the Frontline with a short video as a discussion starter. Katie said this helps their group to feel that, even if they are unable to come to church on a Sunday, they are part of the church. They would love to have new people come and join them and invite mums and carers of small children to come and give the group a try.

Tricia North with Katie Vernon

For more information contact Sue: Tel 0114 2307556.

What is The Friendship Club???

Basically we are a group of people of a certain age who meet every Tuesday at 2 o'clock. However it's more than that! We have a committee of 7 people, all of whom have different jobs in order to make sure that our club has successful Tuesday afternoons. To that end, we remember each member's birthdays, we have a washing-up rota(!!!), we have a team of people who help with the teas and biscuits served at the end of the meeting, we have people who welcome members and collect their £2 weekly contribution, we have a speaker-finder and a lovely pianist.



We celebrate Harvest with peas and pies, Christmas with a lunch and Easter with hymns, prayers, readings and Easter Eggs. We also have a strawberry cream tea in the summer, a Book swap every week and a Sales Table every month.

The meetings consist of a hymn and a prayer, notices, birthday announcements and updates on members. Then we have the 'speaker'; this may be a speaker, a musical item, a choir, an orchestra, or an entertainer. We have returner 'speakers' who become also like members!

It's still more than that; it means that our members get together for a smile and a chat, and it's lovely for people to get together.

We welcome any new members and hope that Tuesday afternoons are occasions for fun, fellowship and entertainment.

"Friendship makes the world a better place to live
Friendship makes living worthwhile, loveable and liveable
Friendship creates the right environs for sharing
The basis of good friendship is selfless, dedicated love of
a special kind. "

See p8 for the programme and for more information contact: Pat Hutchinson: 0114 2497280 and Jackie Smith: 0114 3483069

SPAR has (also) been refurbished!

Continuing the series about Bents Green shops and organisations

I met with Lisa, the manager, in her office behind the scenes at SPAR at Bents Green. She is very busy at the moment following the refurbishment of the shop, but she had also had a bad night with her two year old who is teething. Lisa first came to the Bents Green SPAR 10 years ago, starting as a sales assistant working 16 hours a week. She became the manager 4 years ago and now works 45 hours a week (often more). Although the job is hard work she loves it. There are 14 staff and they work well as a team.



The refurbishment has been two years in preparation and was not easy. The building could not be extended but they wanted to stock more lines and needed more room. Some space has been created by incorporating the Post Office into the shop. Post Office services are now provided from two of the counters in the shop while the other counters are for retail sales. All the staff are now trained in the Post Office requirements and the service is available all the time that SPAR is open from 7am to 10pm every day of the week.



SPAR is a franchise which is run by GT and Lisa feels well supported by the management team of GT based in Barlborough near Chesterfield. Staff from the GT shops help each other out and, at the moment, two managers from other shops are helping with setting up the new stock. Lisa manages the orders and needs to have 70% SPAR brands, but also has 30% from elsewhere, often from local suppliers. The bread is from Roses and meat from Newclose Farm at Bakewell. They now also stock speciality ales such as Thornbridge, Peak Ales and Bradfield.

The day begins at 6 am when 2 staff arrive and prepare the paper rounds, sort the papers and magazines and receive deliveries. Soon they will also be baking bread on the premises before opening at 7 am. They have many customers who come in daily for papers, bread, milk and other and who stop for a laugh and a chat. Some are so regular that they could set their watch by them! In term times there are three periods in the day when a staff member is on the door of the shop to allow only two school children into the shop at a time. Lisa is often called to help deal with difficult situations and has had to bar some individuals from the shop due to their behaviour.

Lisa enjoys working at Bents Green. She has good links with the other local shops and would value more community events like the Street Parties where the shops and church work together for a community occasion.

Tricia North

News from two groups who meet regularly on our premises

Bents Green Arts Group meets each week on a Friday evening from 7.30 – 9.30 pm in the music room. Their time coincides with the youth group who they describe as a lovely group despite the noise! The art group is a self-help group and members bring along their own projects to work on. Most belong to other art groups as well but enjoy coming together and working alongside each other. They would welcome new members and if anyone is interested in joining them ring Connie Bedford 0114 2360516.

Bents Green Singers Many a new day will be dawning for the Bents Green Singers, now one year old. The all female choir is keen to attract both altos and sopranos to join them in rehearsals for songs such as *Many a New Day will Dawn*, old pop songs and traditional pieces and selections from the musical *Top Hat*. BGS invite new members to join them in the music room of the church hall on Tuesday afternoons between 2.15 and 3.45pm.

BGS was formed by former members of the Hill Top Choir which folded when the musical director moved away in 2013. The choir had existed in various forms for over 40 years, performing concerts for friendship groups. The choir has continued this tradition: last year under the leadership of MD Abi McKee and pianist Chris Andrew and, this year, with post-graduate music student, Tierney Kirby, as MD.

A Christmas concert has been booked for December for the Greystones lunch club at St Williams RC Church. For more information ring 0114 2366318.

Church News

Services in October and November will focus on *Fruitful Frontlines*, when we are going to discover how to make a difference as disciples where God has planted us. This will be followed through in many house groups as well.

Service of Healing: "Touch from God" service Sunday 16th November 6.30pm.

Congratulations to Davina and Martin Smith on the baptism of their baby, Tia Elizabeth on Sun 21st September

A thanksgiving service for the life of **Colin Nowell** was held at Bents Green on Tuesday 16th September. We remember Janet and her family in prayer.

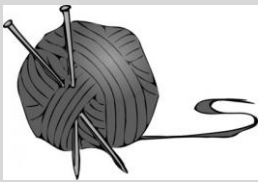
Concert at Bents Green Church: On November 1st at 7.30 Songs for the King: A concert with Philippa Hanna and Godfrey Birtill. Tickets are now on sale £10 (£5 for under 18s). Please send a stamped addressed envelope to *Daphne, 57 Carterknowle Ave, Sheffield S11 9FT* with a stamped addressed envelope and a cheque payable to Bents Green Methodist Church.



Seasons of mists and mellow fruitfulness...'

This line of a John Keats poem is often used to describe the autumn season. It goes on to speak of fruit ripe to the core. How sad it would be if after seeing blossom and growth, we were not to have any fruit. In the same way, as we follow Jesus, we long to be fruitful to give glory to Him. To consider what the fruit of the Spirit is, be it love, joy, peace, patience, kindness, goodness, faithfulness, gentleness, self-control and what these look like in the everyday lives we lead.

Join us this autumn as we seek together to learn ways of doing just that and living life as Christians on the Frontline. This will be the theme of many of our morning services and some Housegroups will also be studying this theme.



KNIT, NATTER, CRAFT AND CHATTER

This new group meets on Wednesday afternoons between 12 noon and 3.00pm in the Music Room at Bents Green Church. Come for some or all of the time. The group are knitting for the Christmas Shoeboxes and for other charities or you are welcome to bring your own project.

Spotlight Spotlight, along with Lighthouse, Lampstand, Torch and Sparks, make up our Floodlight Project for young people at Bents Green. Spotlight covers the performing arts.

The annual pantomime for children and young people takes place every February half term. Recent productions include Snow White, The Little Mermaid, Arabian Nights, Narnia, Peter Pan, and Matilda. The 2015 pantomime is Alice in Wonderland, with over 85 children and young people taking part. The annual musical takes place every summer. So far we have put on Joseph, The Sound of Music, Annie, and Oz. From time to time we also provide songs and dramas for our church services and other events.

Three things matter to us. 1) Every young person who wants to can take part, whatever their ability or background, and they can all aspire to reaching professional standards. 2) Fun and enjoyment are the key to success. 3) Prayer and a Christian message are integral to all our performances.

For more information, contact Glenn Evans on 2351057 or email dglennevans@hotmail.co.uk.



Introducing Cherry

In the few years she has been at Bents Green Church as Youth Minister Cherry has become a central person in the activities of the church. I asked her a few questions.

How did you get into youth work? I went with friends to a youth club in a church in Mansfield and loved it. When I reached 15/16 I wanted to stay on and the only way to do that was to become a helper. So I started to help at the youth club. Then, although I wasn't in the church, they needed someone to run Junior Church so I started to do that. I began to help out more and more.

What happened next? Before training in Youth Work I had a Gap year. I heard about

a charity in Brazil which worked in the favelas and offered an 8 week opportunity to help with the work. I wanted to go somewhere different and see how tough life can be elsewhere. I wanted to push myself in a situation where I had to stick it out. I had to raise money to go and took on 4 different jobs to raise the money. I worked at Subway, Asda, did some paid youth work at the church and worked in a care home. I did nothing but work for months and raised the money to go to Brazil. It was amazing. The children were the happiest children I had known. I worked in a school and did games with the children. The charity also offered work to parents of the children printing T shirts which gave them an income. The Governor of Bella Horizonte visited and agreed to make some changes: as a result of his visit he was publicly committed to carry them through.

What happened after that? I arrived back in Uk on a Monday and came to Sheffield on the Friday to start training in Youth work and work as an Inspyre student in Ecclesall Circuit. I was a student here from 2007 to 2010 and in 2010 the church offered me a part-time job.

How is the job going? The Youth Club has doubled in size in two years – they are lovely kids and now that we have it in the church they are much calmer. 8 or 9 adults come to help each week and without volunteers like them I could not do my job. They are a great asset. I also run Torch, a small group for those who want to talk about faith. I want it to be a time to talk about things which don't usually get talked about, drugs, sex, and drink and to support them through difficult times. We find things in the Bible and see that it is not a book full of rules. With the young people I want to give them the opportunity to think about things and to make up their own minds. I don't want them to just agree but to think about their own views.

You mainly work with the over 12s, but you also work with the 5 – 12s in the Afterschool club. Are there differences? I enjoy the age group in different ways. Younger children need a different way of talking and explaining. It has its own challenges!

How has the Holiday Club gone this year? It's gone well. The children engaged with the activities and enjoyed making their super-hero outfits. We didn't have anyone crying to go home and generally all were happy and smiley. We had 14 – 15 volunteers to help to run it and 31 – 53 children on different days. There was a large team helping to make it happen and at the end all were happy and tired! I think that is the mark of a good week!

Lighthouse After School club

Wednesdays 3.45 pm in the Church Hall

Lampstand Youth Club

Fridays 8 – 10 pm in the Church and halls

See and Know

For babies and toddlers, 0-4 yrs
With their mums and carers in the primary room, Fridays 1.30pm

Services at Bents Green Methodist Church

All are welcome at these services

Sunday mornings at 10.30 am

During morning services there is a crèche for little ones, Sparks Club for younger children and Sunday Club for older children

Sunday evenings at 6.30 pm

An informal service often including tea, coffee and time to chat about subjects relating to the Christian faith.

Service of Healing "Touch from God" service Sunday 16th November 6.30pm.

Wednesdays at 10 am: Midweek service

Minister: Rev Louise Grosberg

Tel. 0114 2363157

Email:

Louise.Grosberg@btinternet.com

Church website:

www.bentsgreenmethodist.org.uk

Church office answerphone:

0114 236 1912

For Room Bookings contact:

Peter Larder

Tel. 0114 2686507

Hilltop Editor:

Tricia North

Email: tn-bg@live.co.uk

Please send material

for the next issue to the editor

by Sun 16th November 2014

Activities for Children and Young People

New members are welcome at these activities at the church.

Contact the named person for more details.

For younger children

Crèche	0-3	Sun 10.30am	Ruth	2686507
Mums & Toddlers	0-4	Wed 10.00am	Irene	2660612
See & Know	0-4	Fri 1.30pm	Ruth	2686507

For children and young people

Girls' Brigade	5-18	Thurs eve	Marian	2361316
Football	11-18	Fri 5-7pm	Glenn	2351057
Holiday Club	5-11	Summer	Cherry	07853278612
Lighthouse	5-11	Wed 3.45	Cherry	07853278612
Messy Services	3-12	Festivals	Sue	2307556
Sparks	4-11	Sun 10.30	John	2307556
Sunday Club	12-18	Sun 10.30	Sue	2307556
Torch	Teens	Tues 6.30	Cherry	07853278612
Lampstand	12-18	Fri 8-10	Cherry	07853278612
Badminton	All ages	Tues eve	Don	2662218
Drama group	All ages	Various	Glenn	2351057
Pantomime	All ages	Annually	Glenn	2351057
Musical	All ages	Annually	Christèle	07912207661

Coffee Mornings:

On the first Saturday of every month from 10.30 – 12 in the Music Room (enter by side door opposite the shops).

Knit & Natter:

Wednesday 12 – 3 pm every week
Bring your knitting or come and knit with patterns and wool provided. In the Music Room.
Contact Sue: 0114 2682334

Harbour Coffee:

On Wednesdays in term-time from 3.30 – 5.45 pm in the Music Room

Tea, Toast & Time 4 Thinking:

Thursdays @ 10.30 am fortnightly.
Upstairs in the Church Lounge.

A time to reflect on what following Jesus is all about. A place for all those seeking answers. Carers of young children especially welcome.

Contact Sue: Tel 0114 2307556

House groups

Many people in the church belong to a house group and meet regularly to pray together, read the bible and talk about the Christian faith. If you are interested in joining a house group

Friendship Club Programme:

Tuesdays at 2 pm in the Church Hall (enter by side door opposite the shops). A warm welcome awaits any who would like to come along – especially men and women over 50

Tues 7 th Oct	FROM HILLSBOROUGH TO HIGH SHERIFF : JULIE KENNY
Tues 14 th Oct	RAY LAWRENCE ENTERTAINS
Tues 21 st Oct	HARVEST PIE & PEAS & ANNE and SYLVIA ENTERTAIN
Tues 28 th Oct	3 WOMENS TALES: ANNE BEEDHAM
Tues 4 th Nov	SHEFFIELD UNDER THE TUDORS & STUARTS
Tues 11 th Nov	WAR & PEACE [SHELAGH MARSTON & FRIENDS]
Tues 18 th Nov	FROM BUCKINGHAM PALACE TO THE BATTLEFIELD
Tues 25 th Nov	WOMEN IN MINING & MINING COMMUNITIES

For more information contact: Pat Hutchinson: 0114 2497280
and Jackie Smith: 0114 3483069